

Celebrating Marine Art Today

BY KELLY COMPTON



American artists have long depicted their nation's scenic coasts, seas, rivers, lakes, canals, and marshes, as well as the people and animals who live in, on, and near them. Partly because of the plein air boom, partly because of society's growing awareness of environmental issues, and partly because it's just a pleasure to contemplate the water, American marine art is experiencing another golden age of excellence and abundance. From two-dimensional works made in oil, watercolor, acrylic, alkyd, gouache, tempera, pastel, scratchboard, or etching to sculptures of wood, bronze, stone, or scrimshaw, there is much to see and buy in all regions, even those far from the oceans.

One focal point of activity is the American Society of Marine Artists (ASMA), the nation's oldest and largest nonprofit organization dedicated to this discipline. Russ Kramer F/ASMA is both a Fellow of the group and its president; he notes that its members now hail from almost every U.S. state and even several foreign nations, and that their range of subject matter is more diverse than ever. This past October, ASMA's juried 16th National Exhibition — featuring more than 120 works made by its members — premiered online at asma16thnational.org. And on view through December 29 at Baltimore's Star Spangled Banner Flag House

are 25 oil paintings created by ASMA members to commemorate the bicentenary of the War of 1812.

Also of key significance to the field is the Maritime Gallery at Connecticut's Mystic Seaport: The Museum of America and the Sea. As its name suggests, the gallery shows the public that not all great marine art was made long ago or is locked away in museums; indeed, some visitors are surprised to learn that they can buy contemporary marine art at all. On view at the gallery through December 31 is its 35th annual International Marine Art exhibition and sale — an ideal opportunity to stock up on gifts for the holiday season.

Finally, just to whet your appetite, here are 22 outstanding examples of today's marine art, gathered from studios and galleries across the country. ■

KELLY COMPTON is a contributing writer to *Fine Art Connoisseur*.

John D'Antonio (b. 1954)
North by Northwest II
2012, Oil on board, 40 x 60 in.
Private collection, Vail, Colorado





Carolyn Egeli (b. 1948)
Tall Ships at Norfolk
2006, Oil on linen, 38 x 48 in.
Collection of the artist



Christopher Blossom F/ASMA (b. 1956)
Calm in the Atlantic
1988, Oil on canvas, 27 1/2 x 43 1/2 in.
J. Russell Jinishian Gallery, Fairfield, Connecticut



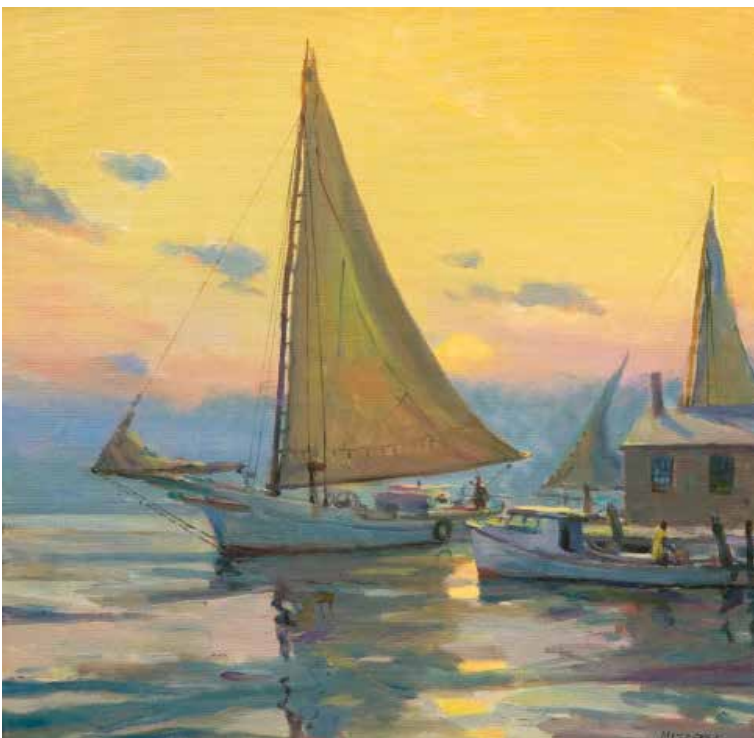
Robert Lagasse ASMA (b. 1931)
Agility
2003, Honduras mahogany, 9 x 16 x 8 in.
J. Russell Jinishian Gallery, Fairfield, Connecticut



Chad Aldrin (b. 1973)
St. Vrain Creek, Rocky Mountain National Park
 2014, Oil on board, 8 x 10 in.
 InSight Gallery, Fredericksburg, Texas



Paula B. Holtzclaw ASMA (b. 1957)
Sunset
 2014, Oil on linen panel, 24 x 36 in.
 Highlands Art Gallery, Lambertville, New Jersey



Leonard Mizerek F/ASMA (b. 1947)
Skipjacks Setting Out
 2013, Oil on linen, 18 x 18 in.
 J.M. Stringer Gallery of Fine Art, Bernardville, New Jersey



Roger Dale Brown (b. 1963)

Gently Rocking

2014, Oil on linen, 22 x 28 in.

Haynes Galleries, Nashville, Tennessee, and
Thomaston, Maine



Bob Upton (b. 1960)

Glare on the Grand Canal, Venice

2012, Oil on linen, 11 x 14 in.

Private collection



Tom Nachreiner (b. 1945)

Gloucester Boats

2014, Oil on canvas, 24 x 30 in.

Private collection



Sergio Roffo F/ASMA (b. 1953)
The Diggers (Duxbury, Massachusetts)
2013, Oil on canvas, 30 x 40 in.
Principle Gallery, Alexandria, Virginia



Debra Huse ASMA (b. 1956)
Island Tradewinds
2014, Oil on canvas, 30 x 40 in.
Debra Huse Gallery,
Balboa Island, California

Hiu Lai Chong ASMA (b. 1975)
Morning Fog
2012, Oil on linen, 18 x 24 in.
McBride Gallery, Annapolis





Darrell Davis F/ASMA (b. 1962)
La Paire d'Amour (Edition of 20)
2013, Bronze, 25 x 16 x 10 in.
Anglin Smith Fine Art (Charleston) and Columbine
Gallery (Loveland, Colorado)



Kent Ullberg F/ASMA (b. 1945)
Red Bull (Redfish) (Edition of 100)
2001, Bronze, 21 x 17 x 10 in.
Ullberg Studios, Inc.



Kim Shaklee F/ASMA (b. 1956)
Gray Ghost (Edition of 20)
2012, Bronze, 14 x 10 x 13 in.
Gallery on Merchants Square (Williamsburg, Virginia),
Howell Gallery (Oklahoma City), Kensington-Stobart
Gallery (Salem, Massachusetts), and Maritime Gallery at
Mystic Seaport (Connecticut)



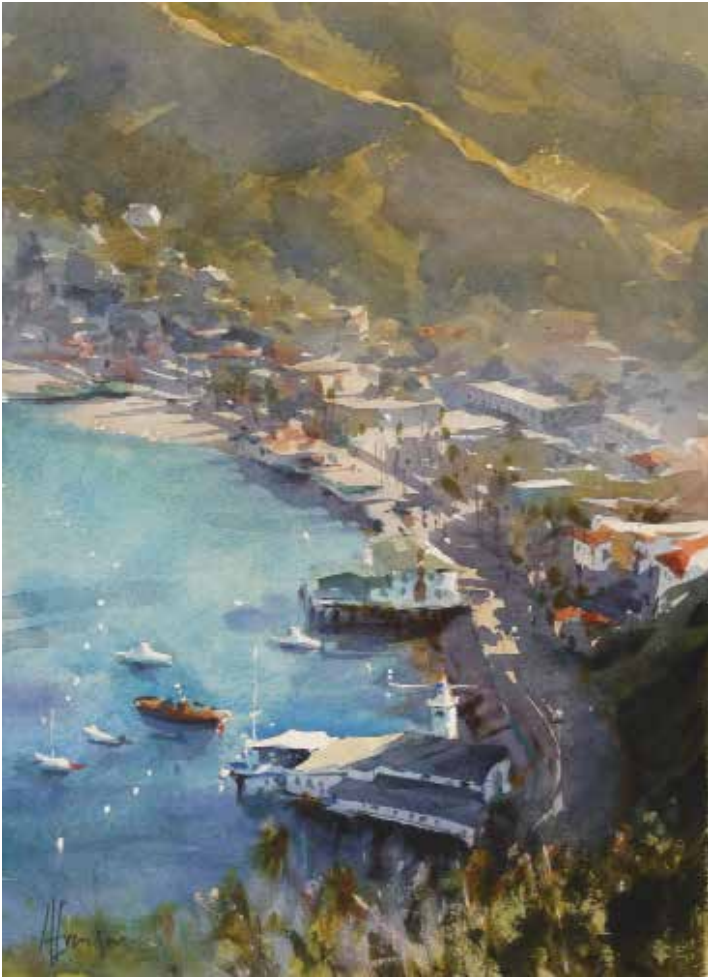
William R. Davis (b. 1952)
Becalmed off Tarpaulin Cove
2012, Oil on canvas, 15 x 30 in.
Private collection



Elizabeth Pollie (b. 1958)
In a Beautiful Pea-Green Boat
2014, Oil on panel, 24 x 24 in.
Private collection



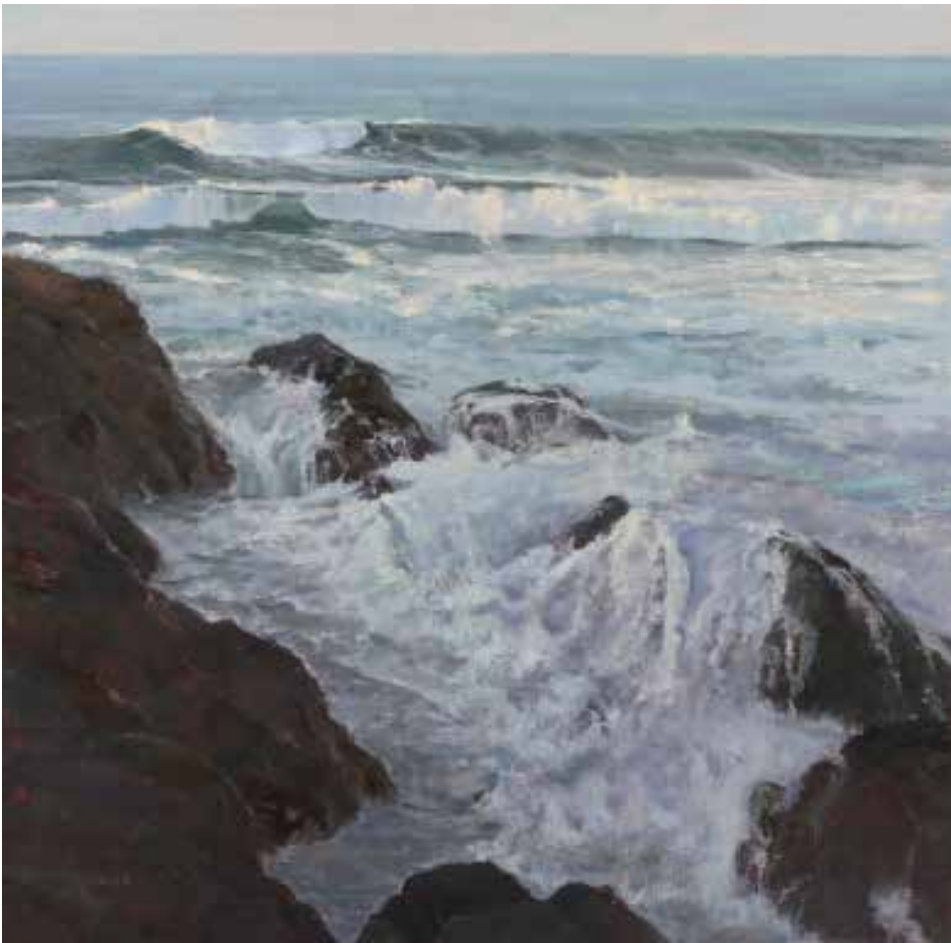
Suze Woolf (b. 1952)
Sunrise on the Ship Canal
2012, Watercolor on paper, 15 x 22 in.
Available from the artist



Andy Evansen (b. 1965)
Raven's Eye View of Avalon
2014, Watercolor on paper, 19 x 14 in.
Exhibited October 26 at the 4th Annual
Catalina: The Wild Side Show & Sale,
Newport Harbor Yacht Club (California)



Carolyn Hesse-Low ASMA (b. 1952)
Moorings
2013, Oil on canvas, 20 x 24 in.
Private collection



Michelle Jung (b. 1964)
Majestic Sea
2014, Oil on canvas, 36 x 36 in.
Available from the artist